



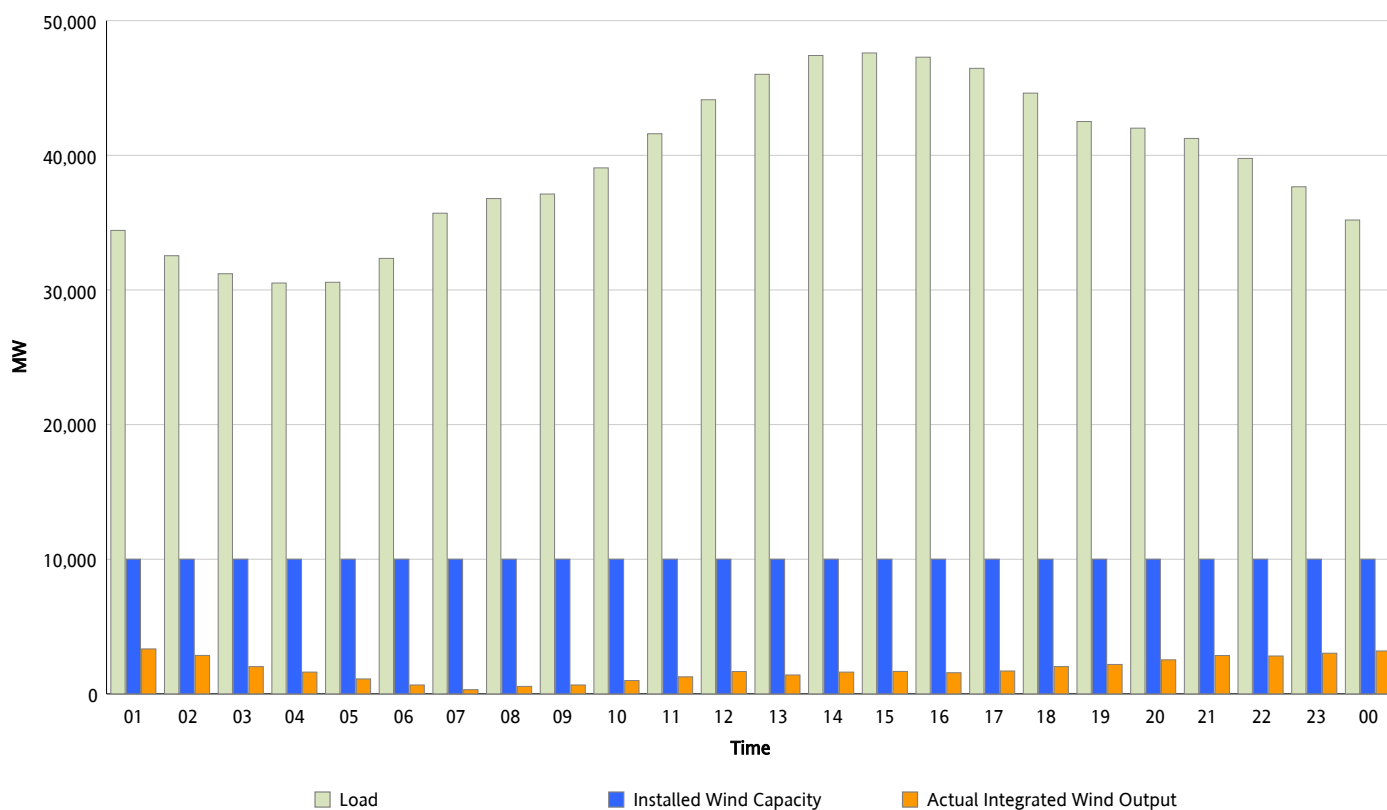
ERCOT Grid Operations

Wind Integration Report : 09/28/2012

Peak Load	47,604 MW
Load Peak Hour (HE)	15
Wind Over Peak	1,668 MW
Wind Record 06/19/12	8,368 MW
Max Wind Value*	3,402 MW
Wind Peak Time	00:46
Wind Integration %	10.04 %

Hourly Average Actual Load vs. Actual Wind Output

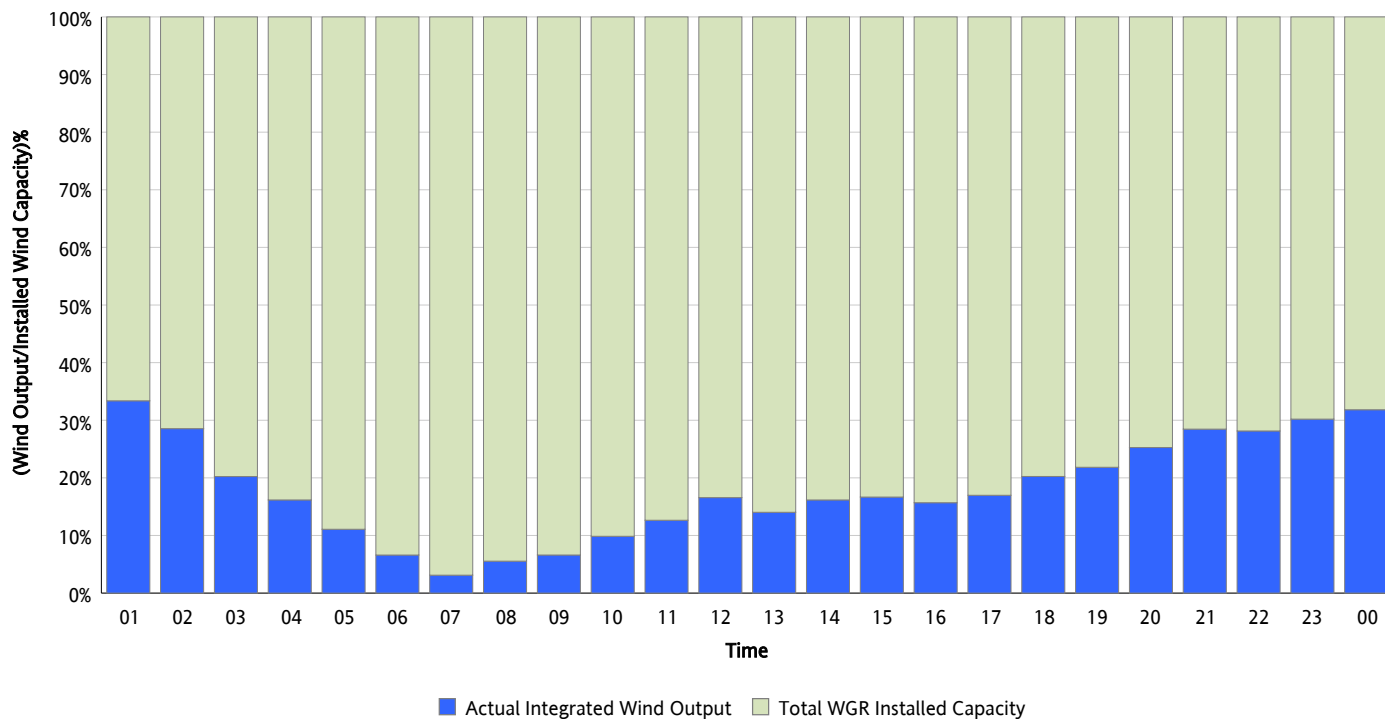
09/28/2012



* Wind Record and Wind Max represent instantaneous values and the rest of the values are integrated over the hour

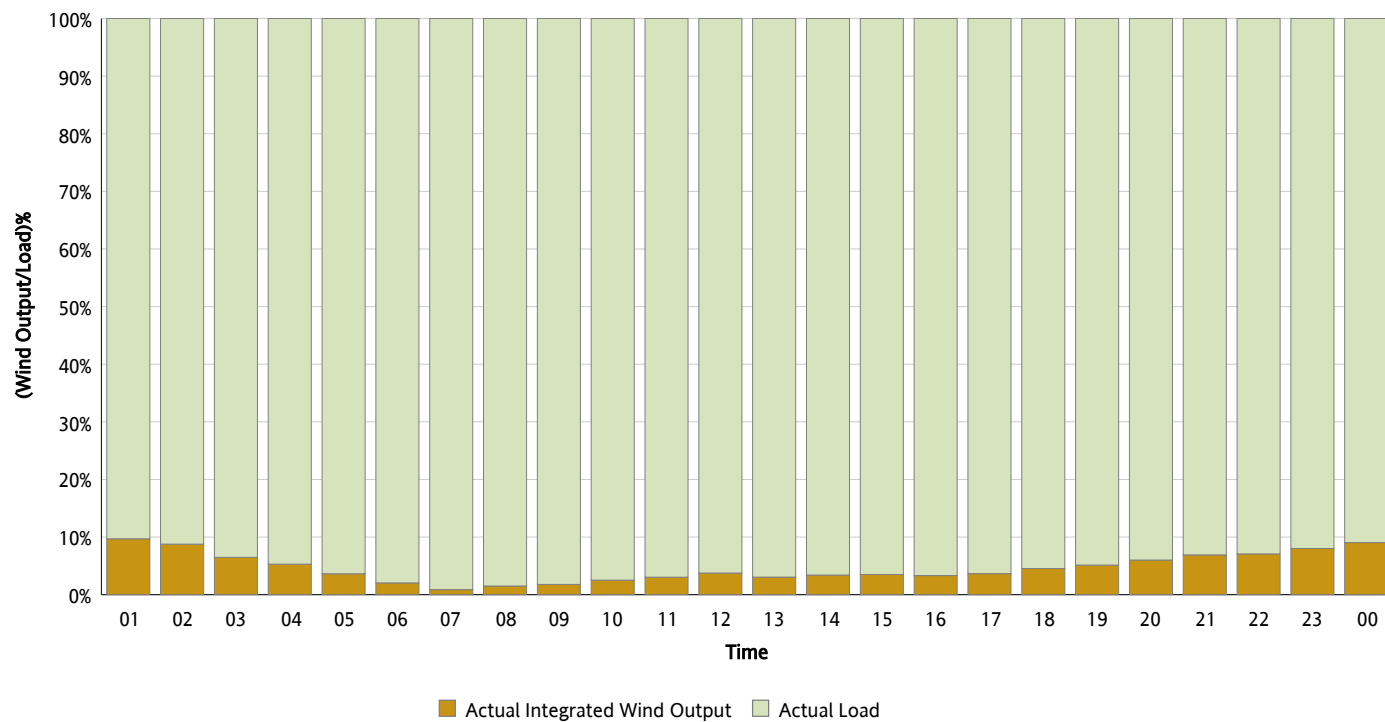
Actual Wind Output as a Percentage of the Total Installed Wind Capacity

09/28/2012



Actual Wind Output as a Percentage of the ERCOT Load

09/28/2012



ERCOT Load vs. Actual Wind Output

09/21/2012 - 09/28/2012

